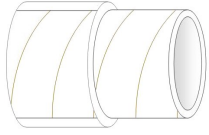


# Water Treatment Dual Containment Systems

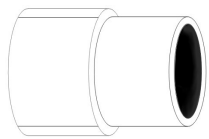


## PF-Detect

- ⇒ All the advantages of the Protectaflex product with the added benefit of a leak detection system
- ⇒ Know the minute your dosing system has any problems
- ⇒ The first leak detectable chemical dosing hose

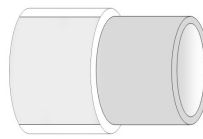
## Protectaflex

Protectaflex offers all the benefits of existing products but in a smaller, lighter and more manageable format. Manufactured with a durable PU outer and a range of inner hoses, Protectaflex provides a solution to all the challenges of traditional flexible dual containment hoses with very few of the drawbacks.



## Protectaflex - NeuVend SI

- ⇒ Cover: Unreinforced, UV stable, non-phthalate, clear PU
- ⇒ Inner Hose: WRAS approved white NeuVend SI (WRAS No. 1202506)

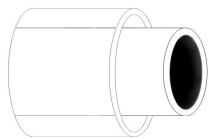


## Protectaflex - VendHose

- ⇒ Cover: Unreinforced, UV stable, non-phthalate, clear PU
- ⇒ Inner Hose: WRAS approved grey VendHose (WRAS No. 1504522)

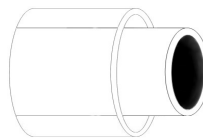
## Draw-Flex Dual Containment System

The key advantage of Colex Draw-Flex over other dual containment products on the market is the wider choice of materials for the inner dosing hoses, ensuring that chemical compatibility requirements are met, and a range of outer containment tubes which can offer better accessibility for securing clips and escaped liquid flow.



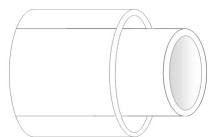
## Draw-Flex PVC - NeuVend SI

- ⇒ Outer Tube: FDA approved, non-phthalate, clear unreinforced PVC
- ⇒ Inner Hose: WRAS approved white NeuVend SI (WRAS Listing No. 1202506)



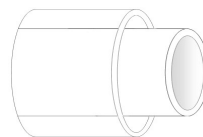
## Draw-Flex PU - NeuVend SI

- ⇒ Outer Tube: Unreinforced, non-phthalate, clear PU outer tube
- ⇒ Inner Hose: WRAS approved white NeuVend SI (WRAS Listing No. 1202506)



## Draw-Flex PVC - Reinforced PVC

- ⇒ Outer Tube: FDA approved, non-phthalate, clear unreinforced PVC
- ⇒ Inner Hose: FDA approved clear reinforced PVC



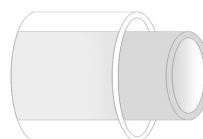
## Draw-Flex PU - Reinforced PVC

- ⇒ Outer Tube: Unreinforced, non-phthalate, clear PU outer tube
- ⇒ Inner Hose: FDA approved clear reinforced PVC



## Draw-Flex PVC - VendHose

- ⇒ Outer Tube: FDA approved, non-phthalate, clear unreinforced PVC
- ⇒ Inner Hose: WRAS approved grey VendHose (WRAS approval No. 1504522)



## Draw-Flex PU - VendHose

- ⇒ Outer Tube: Unreinforced, non-phthalate, clear PU outer tube
- ⇒ Inner Hose: WRAS approved grey VendHose (WRAS approval No. 1504522)

## Catch-Pots

To complement our hose package FT Pipeline Systems can also offer catch-pots for all of our dual containment systems. The standard catch-pot is a 160mm square pot with a depth of 260mm, although any size you require is possible. The catch-pot is made of 5mm high impact clear poly carbonate or PETG sheet and has a removable lid secured with either two stainless steel catches which can be pin locked, or by the use of four screw down posts. The lid is sealed with an EPDM gasket and the hose is connected by our bespoke range of fittings.

## Trace Heating & Lagging

In conjunction with our partners, a range of heat trace and lagging options can be offered.



ft pipeline systems

Contact : Roger Attisha 07879 686680

rattisha@ftpipelinesystems.co.uk

National Technical & Distribution Centre for Dual Containment

www.ftpipelinesystems.co.uk T: 01543 416024