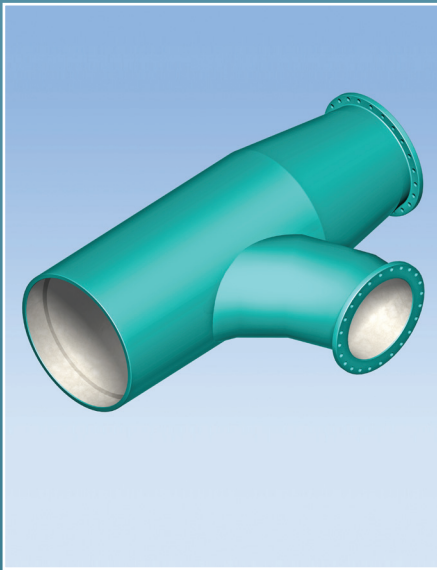
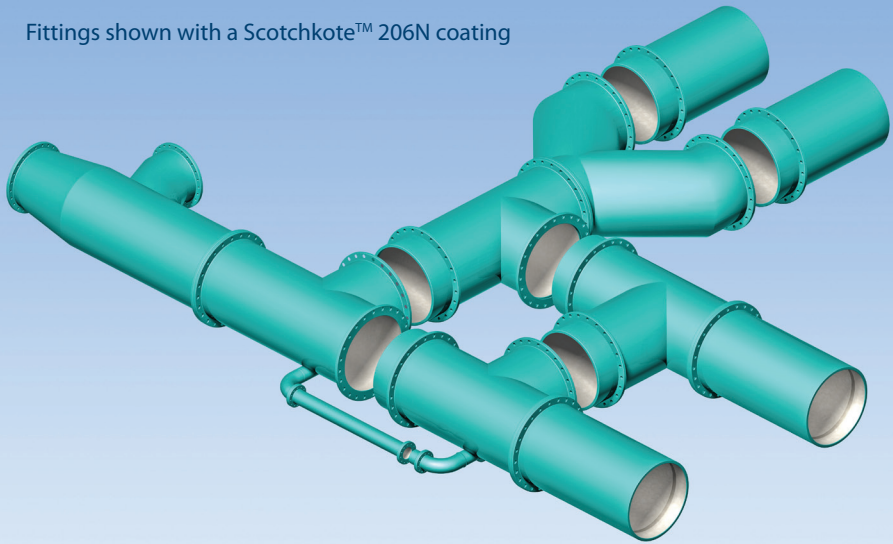


# Steel Fittings



Fittings shown with a Scotchkote™ 206N coating



FT Pipeline Systems can manufacture all the fittings for your scheme. CAD drawings are provided in consultation with the client and are agreed upon prior to the start of manufacturing. Standard fittings are produced according to BS EN 10224. Alternatively, bespoke fittings can be manufactured to suit specific requirements.

## Choice of external coatings...

- Polyurethane.
- Scotchkote™ 206N.
- Sinter Polyethylene.
- 55% Tape Wrap.
- Urethane.
- Fusion Bonded Epoxy.

## Choice of internal linings for potable water...

- DWI approved cement mortar lining.
- DWI approved cement mortar lining with epoxy seal coat.
- Eurokote 468.
- Scotchkote™ 206N.
- Scotchkote™ 162 PWX.

## Choice of internal linings for dirty water...

- Scotchkote™ 162 HB.
- Acronal cement mortar lining.
- Scotchkote™ 165 HB.

## Fabricated fittings are coated and lined to customer requirements, and include but are not limited to:

Bends 1.5D, 3D, 5D • Tees • Crosses • Level Invert Tees • Long-radius bends • Flanges • Flanged Sockets • Flanged Spigots • E Joints • E Joint Sockets • E Joint Spigots • Reducers • Radial Tees

We also stock a large range of pipeline accessories (flanges, couplers, valves, spacers etc). Please contact us for details.



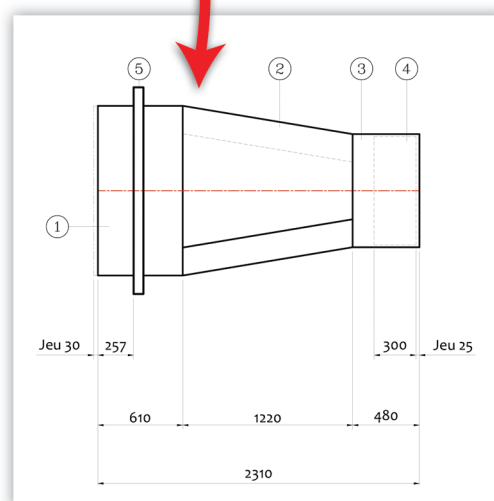
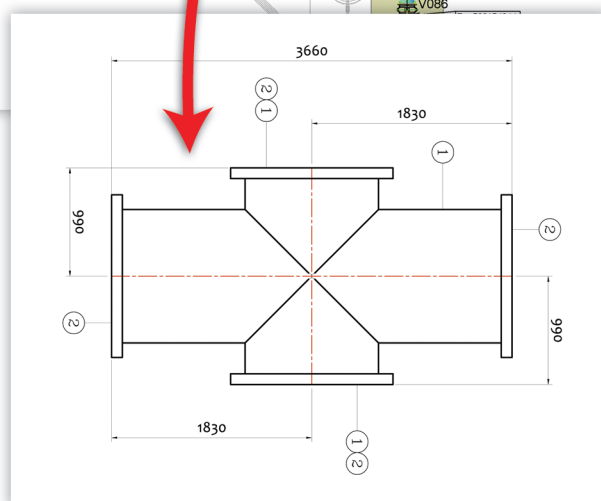
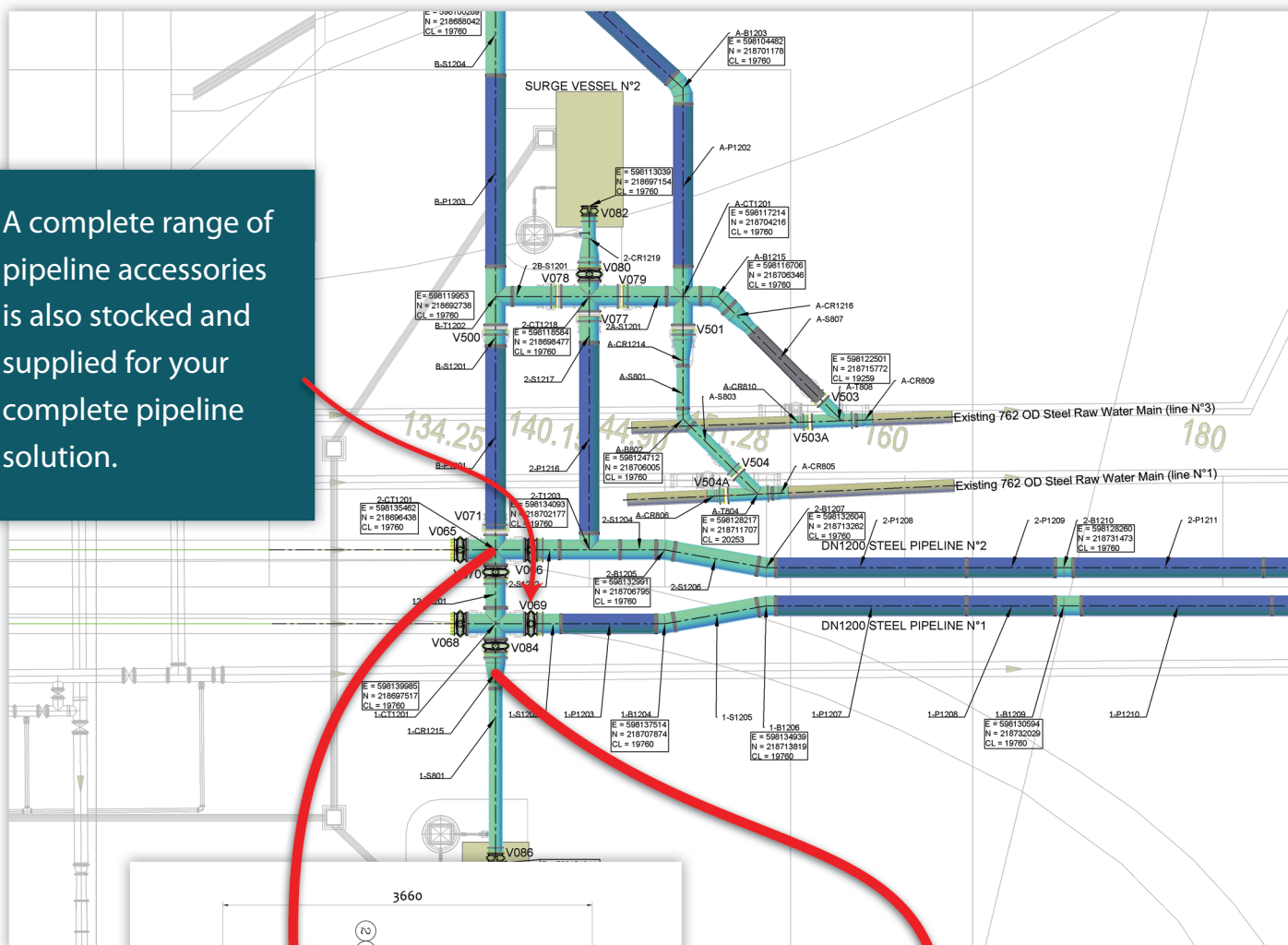
ft pipeline systems

T. 01543 416024 F. 01543 416261 [www.ftpipelinesystems.co.uk](http://www.ftpipelinesystems.co.uk)

Unit 6b Eastern Park Eastern Avenue Lichfield Staffordshire WS13 7SY

# Examples of Steel Fittings...

A complete range of pipeline accessories is also stocked and supplied for your complete pipeline solution.



ft pipeline systems

T. 01543 416024 F. 01543 416261 [www.ftpipelinesystems.co.uk](http://www.ftpipelinesystems.co.uk)

Unit 6b Eastern Park Eastern Avenue Lichfield Staffordshire WS13 7SY