



ADVANCE PRODUCTS & SYSTEMS

FOR FLANGES, VALVES & EXPANSION JOINTS

# SAFETY SPRAY SHIELDS

Contains and Detects Hazardous Sprayouts



ISO-9001 Certified Company - FM537405



# SAFETY SPRAY SHIELDS FOR FLANGES



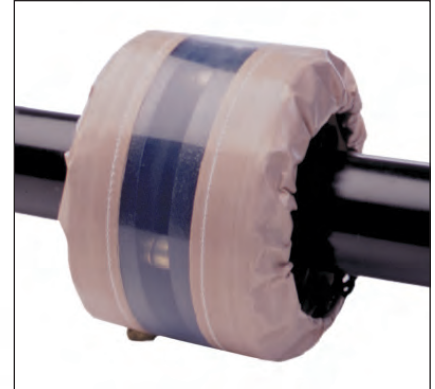
## Cloth

APS PTFE cloth safety shields are manufactured from single and multi layered clear cloth for ease of visibility, or from a colored cloth with a leak indicating patch. Weep holes located behind the sensitive pH indicating patch allow the indicator to immediately signal a leak and will change color to red in the presence of an acid, or green if an alkali. The pH patch is also replaceable which allows reuse of the shield. APS safety shields are UV stabilized and resistant to sun, rain and fumes and may be used indoors or outdoors. Our cloth shields are quickly and easily installed by one person without any tools by means of a hook and loop fastener and drawstrings.

- Cloth safety shields are available in seven different materials and eight various styles
- Can be customized for any and all special requirements or applications
- Available for all ANSI, DIN, PN, BS, JIS, and KS flange sizes



PTFE Premium Spray Shield - Style TP



Clear PTFE Spray Shield - Style TC



PTFE Spray Shield - Style T



PTFE Super Shield - Style TW

## PTFE

- PTFE coated glass cloth
- PTFE or Nomex thread and drawstring
- Maximum operating temperature 450° F
- Fire and tear resistant.
- Available in five styles: premium, standard, single-ply, clear PTFE and PTFE white
- Standard color is brown
- Broad spectrum of chemical resistance

## Standard

- Our most popular and best selling shield
- 3-ply multilayered reinforced construction

## Premium

- High PTFE content for severe applications
- Outlasts all other brands on market.
- 3-ply multi-layered construction
- Laboratory test proven

## Clear PTFE

- Similar in design to standard PTFE shields
- 100% clear PTFE strip in center of shield allows for visual inspection

## Single Ply

- Similar in design to standard PTFE shield
- Single-layered, economical construction for less severe applications

## PTFE Super Shield

- Solid PTFE construction (expanded PTFE cloth)
- PTFE or Nomex cord, thread and reinforcement
- Suitable for applications where coated glass is not acceptable
- Reinforced construction through multi-layered design
- White in color



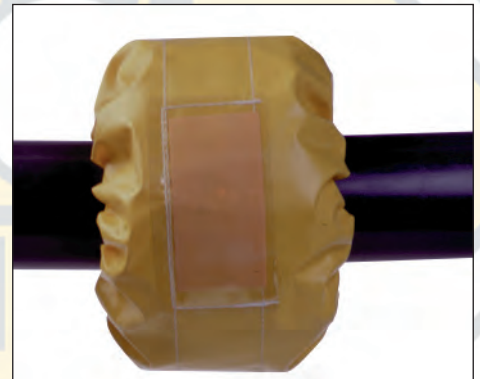
Polypropylene Spray Shield - Style P

#### Polypropylene

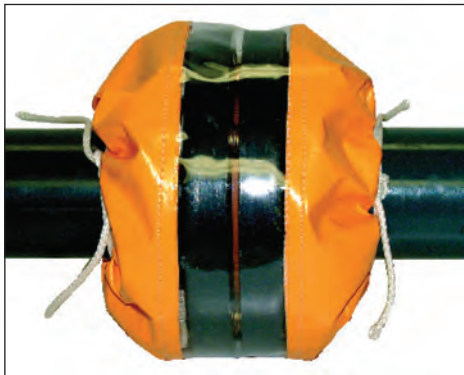
- 100% black polypropylene cloth, thread, and drawstring
- Polypropylene stiffener lines the interior for added protection
- Maximum operating temperature 200° F

#### Polyvinyl Chloride (PVC)

- Manufactured from yellow, reinforced polyvinyl chloride (other colors available)
- Reinforced thread and drawstring
- Maximum operating temperature 170° F



Polyvinyl Chloride (PVC) Spray Shield - Style V



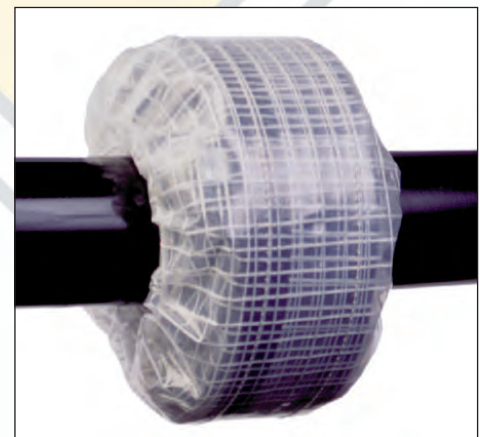
Clear (PVC) Spray Shield - Style VC

#### Clear PVC

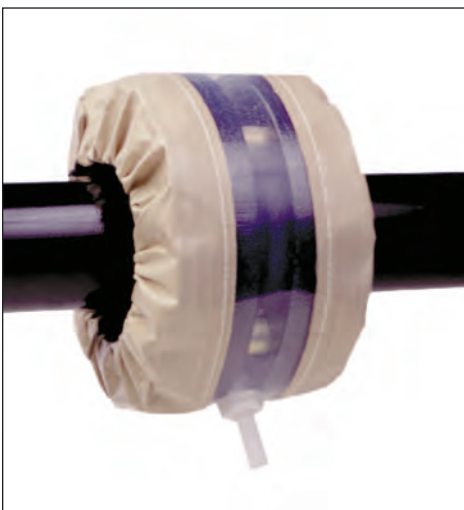
- Similar in design to standard PVC shields
- Clear vinyl strip in center allows for visual inspection

#### Polyethylene

- Manufactured from transparent, reinforced polyethylene
- Reinforced thread and drawstring
- Maximum operating temperature 170° F



Polyethylene Spray Shield - Style PE



Clear PTFE Spray Shield with Drain - Style TCD

#### Optional Drain Feature

- Available on clear PTFE shield
- 100% PTFE drain nipple attached to bottom of shield
- Used for secondary containment, venting, and emissions testing



# SAFETY SPRAY SHIELDS FOR FLANGES



## Metal

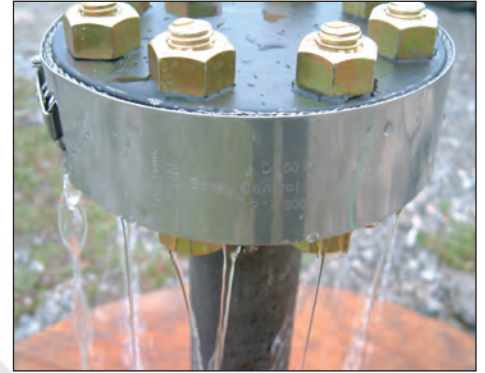
- Used in high temperature, high pressure or when conditions are unfavorable for cloth shields
- Manufactured from 22 or 24 gauge sheet metal
- Slotted overlapped edges prevent lateral spray-outs
- Spacer rods raise shield off flange to dissipate pressure
- Stainless steel screws and keyway slot make installation simple
- Stainless steel hose clamp connections OPTIONAL
- Easily installed by one person with a screwdriver
- Available with anti-mist screen to help eliminate aerosol effect
- Available for all standard flange sizes
- Customized sizes also available

## Stainless Steel

- Recommended for corrosive and hazardous environments
- Available in 304 and 316 grade stainless
- Maximum operating temperature 2,000° F
- Maximum operating pressure 3,500 psi

## Optional Drain Feature

- Available in 304 and 316 stainless steel
- Stainless steel nipple attached to bottom of shield
- Used for secondary containment, ventings and emissions testing



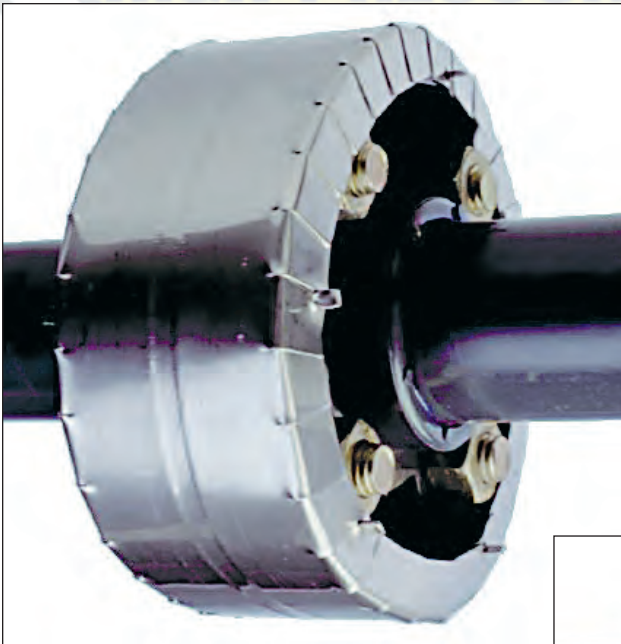
Patent Pending

Arrestor Splash Deflector® Shield

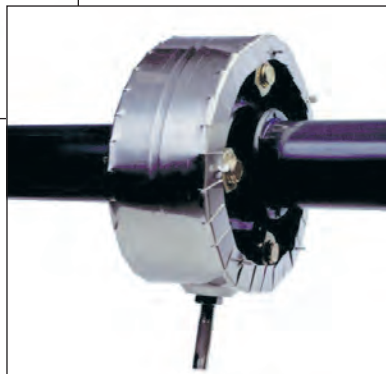
## Arrestor Splash Deflector®

Specifically designed to capture sprayouts from faulty flanges carrying dangerous liquids, the Arrestor Splash Deflector® gets the job done right the first time.

- Produced entirely with stainless steel
- Easy & accurate installation by one person
- No maintenance required
- Reusable many times over the life of the installation
- Available for most ANSI & API flanges
- Lightweight



Stainless Steel Spray Shield



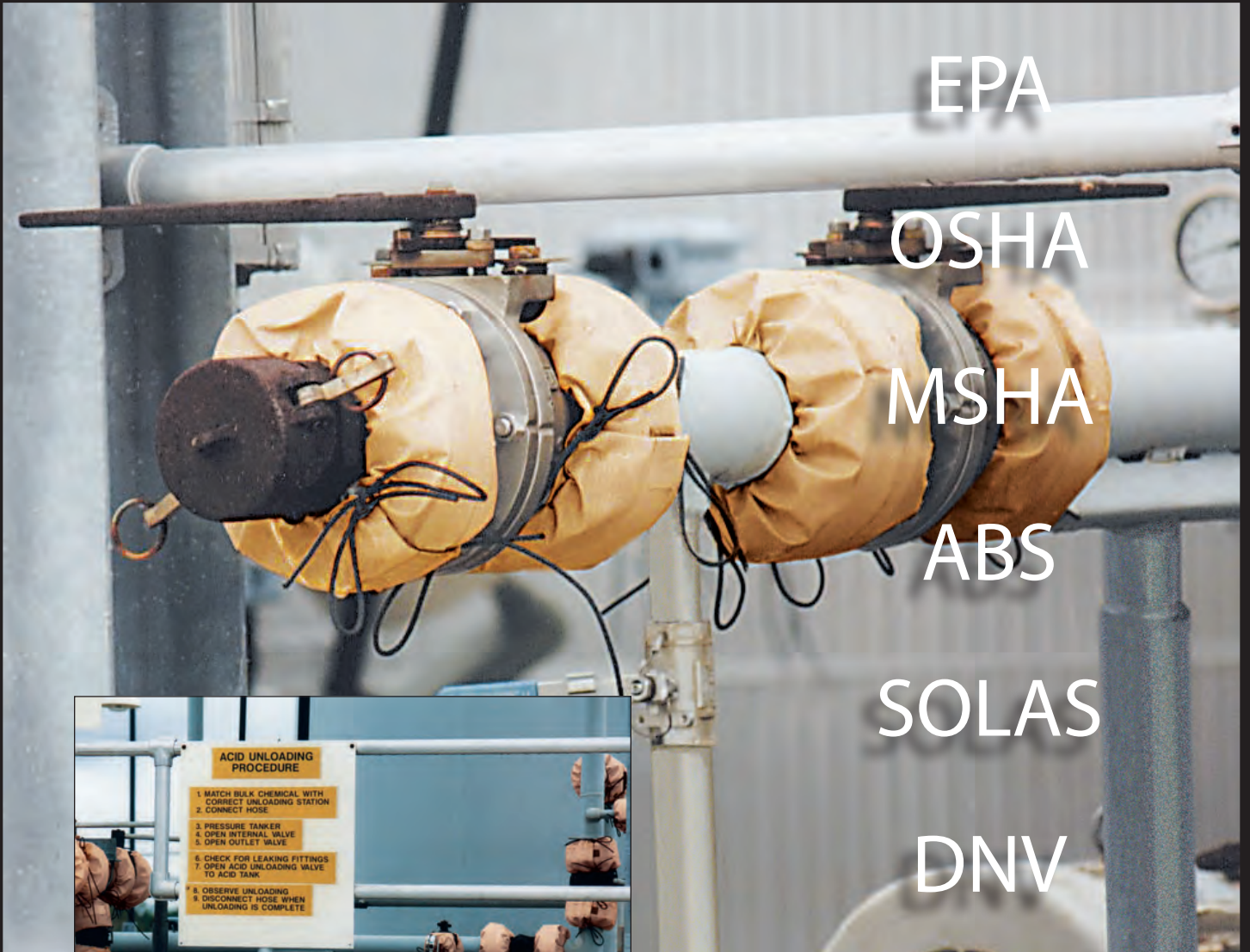
Stainless Steel Spray Shield with Drain



SAFETY SPRAY SHIELDS ON LOCATION



SAFETY FOR PERSONNEL, EQUIPMENT AND THE ENVIRONMENT



EPA

OSHA

MSHA

ABS

SOLAS

DNV



- ACID UNLOADING PROCEDURE**
1. MATCH BULK CHEMICAL WITH CORRECT UNLOADING STATION
  2. CONNECT HOSE
  3. PRESSURE TANKER
  4. OPEN INTERNAL VALVE
  5. OPEN OUTLET VALVE
  6. CHECK FOR LEAKING FITTINGS
  7. OPEN ACID UNLOADING VALVE TO ACID TANK
  8. OBSERVE UNLOADING
  9. DISCONNECT HOSE WHEN UNLOADING IS COMPLETE



APS Safety Spray Shields

Sizes in stock - 1/2" to 48"

Custom shields are available upon request



## SAFETY SPRAY SHIELDS FOR EXPANSION JOINTS & VALVES



### Expansion Joint Shields

- Available in same cloth and metal materials as other shields
- Same quality design as other cloth shields
- Attached by velcro fasteners and drawstrings
- Allows for movement of the expansion joint without any change in effectiveness
- Available for all brands and styles of expansion joints



Clear PTFE Expansion Joint Shield



PTFE Expansion Joint Shield

### Valve Shields

- Available in same cloth and metal materials as other shields
- Manufactured to fit all types of valves:
  - *Butterfly*
  - *Globe*
  - *Check*
  - *Diaphragm*
  - *Gate*
  - *Ball*
  - *Plug*
  - *Control*



Clear PTFE Ball Valve Shield



Globe Valve Bonnet Shield



## SAFETY SPRAY SHIELDS FOR SPECIALTY ITEMS



### Pipe Vent Covers

- Designed to cover the pipe vent outlet on safety relief valves and rupture discs
- Manufactured from heavy duty polyvinyl chloride (PVC) or PTFE.
- Weatherproof: prevents rainwater and snow from entering
- Keeps out birds and insects
- UV stabilized and chemical resistant
- Simple and easy to install.
- Contains a drawstring for securing
- Contains a grommet with rope attached to prevent loss
- Available for all pipe sizes
- Available in angle or straight cut

### Hose Shields

- Manufactured from PTFE and polyvinyl chloride
- pH indicating patch signals leaks
- Available for any size and length
- Attached by velcro fasteners and drawstrings - wraparound design or drawstrings only - tube design

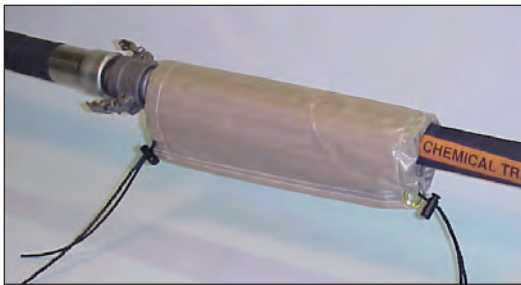
### Transfer Line Sleeves

- Quickly fits over the locking mechanism
- Have rapid connect and release tie locks
- Are reusable and UV resistant
- Are made of rugged PTFE impregnated glass cloth with PTFE drawstrings suitable for maximum operating temperature of 450° F
- Are economical

### Other Specialty Shields

Custom designed for:

- Sight Glasses
- Fittings
- Flow Indicators
- Instruments
- Pressure Vessels
- Manways
- Pumps



Transfer Line Sleeve



Hose Shield



"T" Type Fitting Shield

## TO ORDER

### METAL SHIELDS

#### FOR VALVES - PLEASE SPECIFY

1. Pipe Size
2. Type of Valve and Manufacturer
3. Width of Valve Including Flange
4. Location of Control Arm
5. Diameter of Opening to Accommodate Stem
6. Type of Metal - 304, 316 Stainless

#### FOR FLANGES - PLEASE SPECIFY

1. Pipe Size
2. Pressure Rating
3. Type of Metal - 304, 316 Stainless

### CLOTH SHIELDS

#### FOR VALVES - PLEASE SPECIFY

1. Pipe Size
2. Type of Valve and Manufacturer
3. Width of Valve Including Flange
4. Location of Control Arm
5. Diameter of Opening to Accommodate Stem
6. Type Cloth - PTFE, Polyvinyl, Polyethylene, Polypropylene

#### FOR FLANGES - PLEASE SPECIFY

1. Pipe Size
2. Pressure Rating
3. Type Cloth - PTFE, Polyvinyl, Polyethylene, Polypropylene

#### For Expansion Joints - Please Specify

1. Pipe Size
2. Manufacturer of Expansion Joint
3. Number of Convolutions

### Examples of Industries That Use Spray Shields

- Aerospace
- Mining
- Automotive
- Petrochemical
- Chemical
- Pharmaceutical
- Cosmetic & Perfume
- Nuclear Power
- Electronics & Semiconductor
- Conventional Pulp & Paper
- Food & Beverage Processing
- Refineries
- Manufacturers of Household Cleaners/Detergents
- Steel Industry
- Sewage & Waste Water Treatment
- Manufacturers of Insecticides/Herbicides
- Military Ships
- Commercial Ships

### Other Quality Products

- Flange Isolating Gasket Kits
- Kleerband® Flange Protectors
- Radolid® Nut & Bolt Protection Caps
- UBolt-Cote® & Atlas® Pipe Supports
- Casing Spacers/Centralizers and End Seals for Dual Containment
- Monolithic Isolation Joints
- Innerlynx® Pipe Penetration Seals
- Foreman Night Caps
- Hammer Cushion Pads



## Advance Products & Systems, Inc.

P.O. Box 60399  
Lafayette, Louisiana 70596-0399  
800-315-6009  
(337) 233-6116 • Fax (337) 232-3860  
Email: sales@advprod.com  
Website: www.advprod.com



ISO 9001  
FM 537405

Distributed By:

Advance Products & Systems, Inc. is not responsible for errors printed in this brochure.

Advance Products & Systems, Inc. shall repair or replace (within the limitations of such applicable express written warranty as may be issued by it) any product or portions thereof, which prove to be defective in workmanship or material for a period of 12 months from shipment date. The foregoing in lieu of all warranties, express or implied, and all other obligations or liabilities on the part of APS, on account of the product which it may sell. In no event shall APS be liable for consequential or special damages: nor except as it may otherwise specifically agree in writing, installation, or other work which may be done upon or in connection with the product by APS/ the distribution / dealer or others. THE LIMITED WARRANTIES PROVIDED IN THIS AGREEMENT AND THE OBLIGATIONS AND LIABILITIES OF APS ARE THE ONLY WARRANTIES MADE BY APS AS TO THE PRODUCT. APS MAKES NO EXPRESS OR OTHER IMPLIED WARRANTIES, BY COURSE OF DEALING, USAGE OF TRADE, MERCHANTABILITY, FITNESS FOR A PARTICULAR USE (WHETHER GENERAL OR SPECIFIC), OR OTHERWISE.