

END SEALS

Outperforms costly and labor-intensive method of sealing casing ends

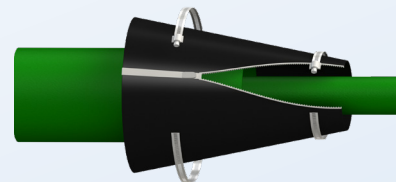


APS manufactures full conical shaped end seals made of 1/8" thick synthetic rubber, assuring excellent chemical resistance and resiliency. End seals by APS can accommodate any combination of pipe sizes. These products outperform the costly and labor intensive brick and mortar method of sealing casing ends. While soil stress and pipe movement cause mortar to crack, the APS end seals move with the pipe, insuring the integrity of your seal.



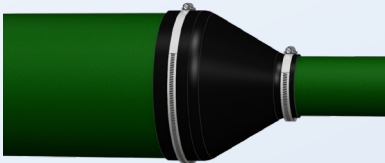
AMCE MOLDED CONE END SEAL

5 different sizes, 4.50"-24.00" OD, covers a range of carriers, closed cone feature - cut off end or use as a cap to keep debris or animals out.



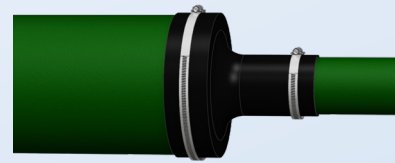
AZ ZIPPER END SEAL

New construction & on existing casings that require modifications or extension. Produced as concentric & eccentric



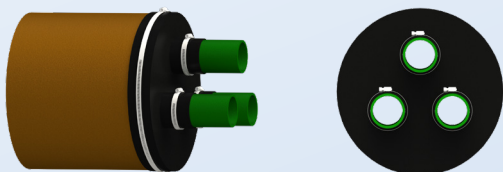
AC PULL ON SEAL

Installed at the time of construction
Produced as concentric & eccentric



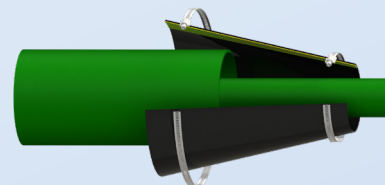
AM MOLDED END SEAL

Installed at the time of construction



APC CLUSTER

Available for multicarrier installations



AW WRAP-AROUND SEAL

Installed when carrier line is already installed & pull is complete.
Produced as concentric & eccentric

All APS End Seals are secured with stainless steel banding straps with a worm gear mechanism to ensure the integrity of the clamp. Only a screwdriver is needed for installation.



WWW.APSONLINE.COM

**FOR MORE INFORMATION
PLEASE CONTACT US
1-800-315-6009**



SALES@APSONLINE.COM

REV 042425