



# Catalogue



## Safe

Eliminate back injuries



## Effective

Designed to break the seal



## Efficient

Saves time on the job

February 2025

+44 1443 704 706

[www.coverupkey.com](http://www.coverupkey.com)



Traditional methods of releasing stubborn manhole covers are unsafe, ineffective and inefficient



HAMMERING DOWN IS THE OPPOSITE OF THE FORCE NEEDED TO RELEASE STUBBORN AND STUCK COVERS.

HAMMER IT UP!



The CoverUp Key has a patented slide-hammer action which exerts a massive, upward impact force capable of releasing stuck, seized and rusted chamber covers effectively and efficiently - it's designed for the job



SUPPLIED WITH CARRY CASE



MULTI DIRECTIONAL INTERCHANGEABLE TIPS

*"We used the CoverUp Key in an estate where a lot of manholes were seized. It saved us a lot of time and, more importantly, was much safer than using hammers, crowbars, chisels and a can of WD40!" - Easyview*

*"I tried the CoverUp Key for the first time today and wow, just wow; it's a proper game changer!" - Darren Gillam, Drain Developments*

[www.coverupkey.com](http://www.coverupkey.com)



## Industry Complete Sets

### Starter Set

Item Code: GBSTSET / Tip Kit Code: GBSTKIT

Includes:

- Accessory Case - 020CUK
- CoverUp Key Bar - 001BAR
- 32mm Flat Tip - 002F32



### Drainage Set

Item Code: GBDRSET / Tip Kit Code: GBDRKIT

Includes:

- Accessory Case - 020CUK
- CoverUp Key Bar - 001BAR
- 32mm Flat Tip - 002F32
- 22mm Flat Tip - 003F22
- 12mm J Hook Tip - 017J12
- Cleaning Tip - 006J08

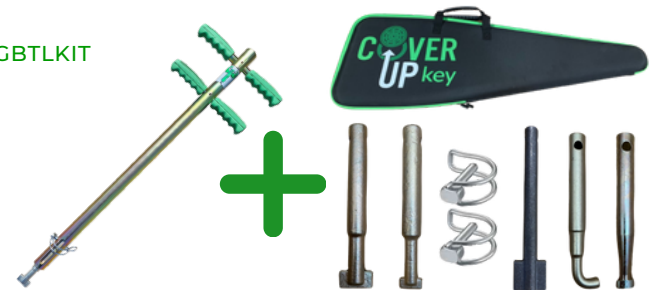


### Telecoms Set

Item Code: GBTLSET / Tip Kit Code: GBTLKIT

Includes:

- Accessory Case - 020CUK
- CoverUp Key Bar - 001BAR
- 32mm Flat Tip - 002F32
- 22mm Flat Tip - 003F22
- 12mm J Hook Tip - 017J12
- 20mm Oval Tip - 009O20





## Industry Complete Sets

### Pest Control Set

Item Code: GBPCSET / Tip Kit Code: GBPCKIT

Includes:

- Accessory Case - 020CUK
- CoverUp Key Bar - 001BAR
- 22mm Flat Tip - 003F22
- 32mm Flat Tip - 002F32
- 12mm J Hook Tip - 017J12
- 10mm Threaded Tip - 005T10
- 12mm Threaded Tip - 004T12



### Fresh Water/Gas Network Set

Item Code: GBFWSET / Tip Kit Code: GBFWKT

Includes:

- Accessory Case - 020CUK
- CoverUp Key Bar - 001BAR
- 32mm Flat Tip - 002F32
- 22mm Flat Tip - 003F22
- 12mm J Hook Tip - 017J12
- Cleaning Tip - 006J08
- Fire Hydrant Valve Key - 011HYD



### Electricity Set

Item Code: GBELSET / Tip Kit Code: GBELKIT

Includes:

- Accessory Case - 020CUK
- CoverUp Key Bar - 001BAR
- 22mm Flat Tip - 003F22
- 20mm Oval Tip - 009O20
- 12mm J Hook Tip - 017J12
- Cleaning Tip - 006J08





## Industry/Country Complete Sets

### Australian/New Zealand Set

Item Code: AUNZSET / Tip Kit Code: AUNZKIT

Includes:

- Accessory Case - 020CUK
- CoverUp Key Bar - 001BAR
- 31mm Oval Tip - 008O30
- 20mm Oval Tip - 009O20
- Cleaning Tip - 006J08
- 16mm J Hook Tip - 013J16
- 12mm C Hook Tip - 010CHK



### US Set

Item Code: USBASET / Tip Kit Code: USBAKIT

Includes:

- Accessory Case - 020CUK
- CoverUp Key Bar - 001BAR
- 12mm J Hook Tip - 017J12
- 16mm J Hook Tip - 013J16
- Cleaning Tip - 006J08
- 20mm Gulley Tip - 019GLY

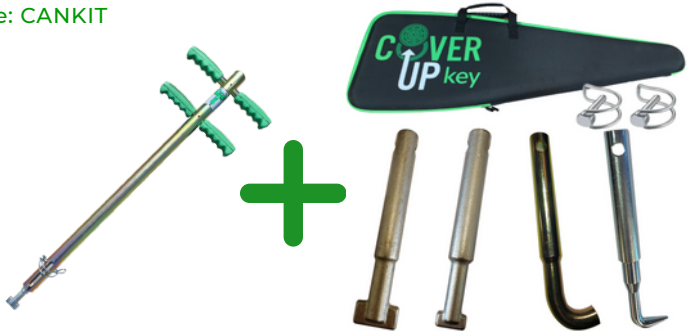


### Canadian Set

Item Code: CANSET / Tip Kit Code: CANKIT

Includes:

- Accessory Case - 020CUK
- CoverUp Key Bar - 001BAR
- 32mm Flat Tip - 002F32
- 22mm Flat Tip - 003F22
- 16mm J Hook Tip - 013J16
- Cleaning Tip - 006J08





## Country Complete Sets

### German Drainage Set

Item Code: GERMSET / Tip Kit Code: GERMKIT

Includes:

- Accessory Case - 020CUK
- CoverUp Key Bar - 001BAR
- 32mm Flat Tip - 002F32
- 12mm J Hook Tip - 017J12
- 16mm J Hook Tip - 013J16
- 12mm C Hook Tip - 010CHK

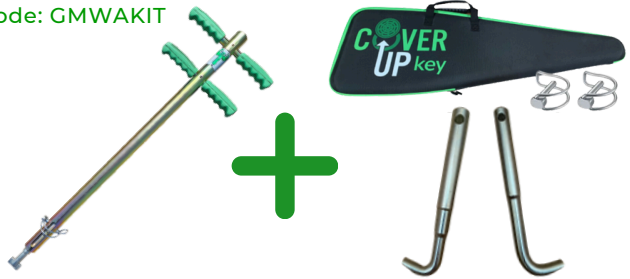


### German Water Set

Item Code: GMWASET / Tip Kit Code: GMWAKIT

Includes:

- Accessory Case - 020CUK
- CoverUp Key Bar - 001BAR
- 12mm Hacken Tip - 028HA12
- 16mm Hacken Tip - 027HA16



### Japanese Set

Item Code: JPNSET / Tip Kit Code: JPNKIT

Includes:

- Accessory Case - 018CAS
- CoverUp Key Bar - 001BAR
- 32mm Flat Tip - 002F32
- 22mm Flat Tip - 003F22
- Cleaning Tip - 006J08
- 12mm J Hook Tip - 017J12
- 16mm J Hook Tip - 013J16
- 12mm C Hook Tip - 010CHK



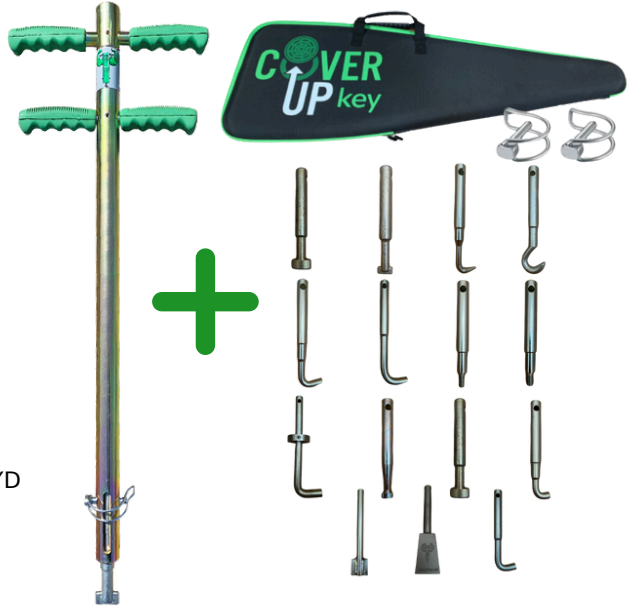


## Full Set

Item Code: FLLSET / Tip Kit Code: FLLKIT

Includes:

- Accessory Case - 020CUK
- CoverUp Key Bar - 001BAR
- 22mm Flat Tip - 003F22
- 32mm Flat Tip - 002F32
- 12mm J Hook Tip - 017J12
- 16mm J Hook Tip - 013J16
- 12mm C Hook Tip - 010CHK
- Cleaning Tip - 006J08
- 10mm Threaded Tip - 005T10
- 12mm Threaded Tip - 004T12
- 20mm Oval Tip - 009O20
- 31mm Oval Tip - 008O30
- 20mm Gully Tip - 019GLY
- Fire Hydrant Valve Key - 011HYD
- 12mm Hacken Tip- 028HA12
- 16mm Hacken Tip - 027HA16
- Telecoms Tip - 024TL40



NOTE: tips included may vary as new items are added from time to time

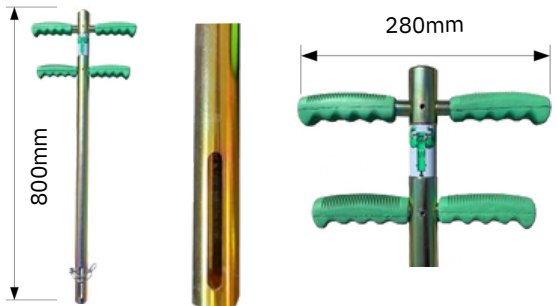
## Individual Bars & Tips

### CoverUp Key – Bar Only – 001BAR

The CoverUp Key – slide-hammer action, access cover releasing tool for stuck or seized covers. Featuring dual level handles for ergonomic use supporting good operative posture, and the ability to insert tips in multiple orientations. NOTE: For the bar to be operational you must also be in possession of a retaining clip and a tip.

Dimensions (L x D): 800 x 35mm  
Handle Width: 280mm  
Weight: 6.6kg  
Material: Plated Steel

Heavy Duty





## Individual Bars & Tips

### Fire Hydrant CoverUp Key - GBFHSET

Designed in conjunction with UK Fire & Rescue Services, the Fire Hydrant CoverUp Key Kit is a combined access cover removal tool and hydrant valve tool in a single, compact and quickly deployable tool. The tool has storage for 2 CoverUp Key flat tips, and an extra long removable handle to provide extra leverage when opening valves.

Dimensions (L x D): 1220 x 35mm  
 Handle Length: 640mm  
 Weight: 6.2kg  
 Material: Steel



### Heavy Duty ☺

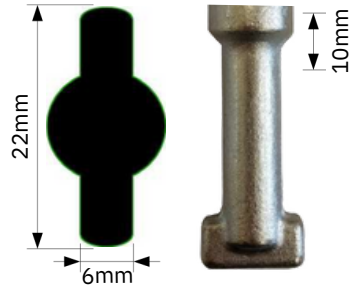
### 22mm Flat Tip - 003F22

Designed to fit any access cover with a keyhole size of approximately 20mm.

Dimensions (L x D): 160 x 20mm  
 Head Size: 22 x 6 x 10mm  
 Weight: 0.3kg  
 Material: Hardened Steel

Used with:

- ☺ Drainage
- ☺ Gas
- ☺ Electricity
- ☺ Telecoms
- ☺ Pest Control
- ☺ Fire Service
- ☺ Fresh Water



### Medium Duty ☺

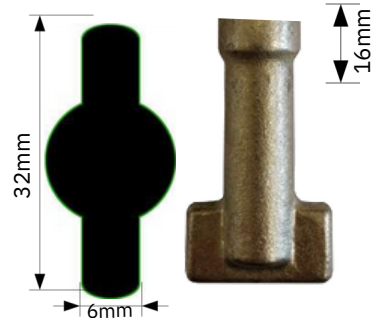
### 32mm Flat Tip - 002F32

One of the most commonly used access cover keyhole shapes worldwide. Will fit most covers with a keyhole size of approximately 30mm.

Dimensions (L x D): 160 x 20mm  
 Head Size: 32 x 6 x 16mm  
 Weight: 0.3kg  
 Material: Hardened Steel

Used with:

- ☺ Drainage
- ☺ Gas
- ☺ Electricity
- ☺ Telecoms
- ☺ Pest Control
- ☺ Fire Service
- ☺ Fresh Water



### Heavy Duty ☺



## Individual Bars & Tips

### 20mm Gully Tip - 019GLY

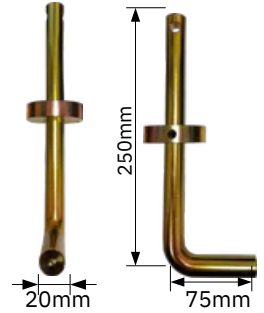
A 20mm hooked tip designed for use with seized gully covers, with a stopper disc that allows the user to hammer the tip into clogged gully grates and also reduces the travel of the tip allowing more force to be exerted on the cover.

Dimensions (L x D): 250 x 75mm  
 Head Size: 20 x 75mm Hook  
 Weight: 1.0kg  
 Material: Steel

Heavy Duty ☺

Used with:

- ☑ Drainage
- ☐ Gas
- ☐ Electricity
- ☐ Telecoms
- ☑ Pest Control
- ☐ Fire Service
- ☐ Fresh Water



### 25mm T-Type Gully Tip - 029TG25

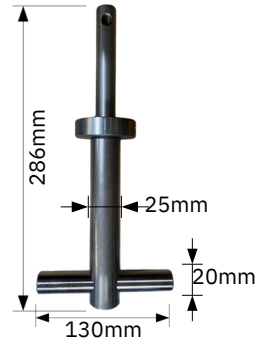
T-type 25mm tip designed for use with seized gully covers, with a stopper disc that allows the user to hammer the tip into clogged gully grates. 'T' shape improves lifting efficiency and stability if the grate is lifted.

Dimensions (L x D): 286 x 130mm  
 Head Size: 25 x 130mm 'T'  
 Weight: 1.25kg  
 Material: Steel

Heavy Duty ☺

Used with:

- ☑ Drainage
- ☐ Gas
- ☐ Electricity
- ☐ Telecoms
- ☑ Pest Control
- ☐ Fire Service
- ☐ Fresh Water



### 8mm Cleaning Tip - 006J08

An 8mm 'J' shaped hook, ideal for cleaning out the dirt and grit that becomes clogged in access cover keyholes over time.

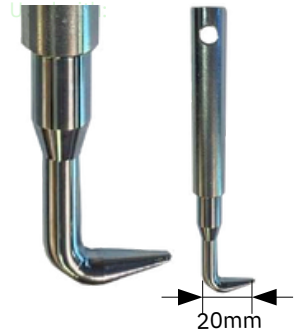
NOTE: This tip is for cleaning only, NOT for raising covers - it will break if used incorrectly.

Dimensions (L x D): 174 x 20mm  
 Head Size: 20mm (L) x 8mm (D) 'J' Shape  
 Weight: 0.3kg  
 Material: Hardened Steel

Light Duty ☺

Used with:

- ☑ Drainage
- ☑ Gas
- ☑ Electricity
- ☑ Telecoms
- ☑ Pest Control
- ☑ Fire Service
- ☑ Fresh Water





## Individual Bars & Tips

### 12mm J Tip - 017J12

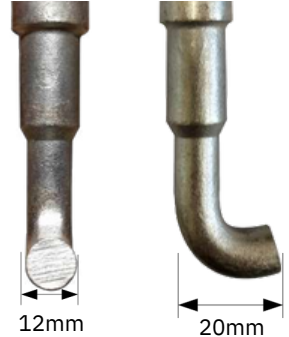
A 12mm 'J' shaped hook can be used with many different types of access covers and gulleys.

Dimensions (L x D): 174 x 20mm  
 Head Size: 20mm (L) x 12mm (D) 'J' Shape  
 Weight: 0.3kg  
 Material: Hardened Steel

Heavy Duty ☹

Used with:

- ☑ Drainage
- ☑ Gas
- ☑ Electricity
- ☑ Telecoms
- ☑ Pest Control
- ☐ Fire Service
- ☑ Fresh Water



### 16mm J Tip - 013J16

A 16mm 'J' shaped hook can be used with many different types of access covers and gulleys.

Dimensions (L x D): 174 x 40mm  
 Head Size: 40mm (L) x 16mm (D) 'J' Shape  
 Weight: 0.3kg  
 Material: Hardened Steel

Heavy Duty ☹

Used with:

- ☑ Drainage
- ☐ Gas
- ☑ Electricity
- ☐ Telecoms
- ☐ Pest Control
- ☐ Fire Service
- ☑ Fresh Water



### 12mm Hooked Tip - 010CHK

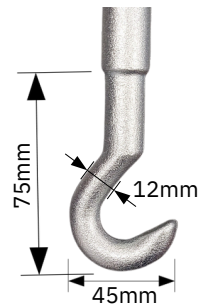
A 12mm 'C' Shaped Hook for use with many different kinds of light gully covers.

Dimensions (L x D): 182 x 20mm  
 Head Size: 12mm Hook  
 Weight: 0.3kg  
 Material: Hardened Steel

Light Duty ☺

Used with:

- ☑ Drainage
- ☐ Gas
- ☐ Electricity
- ☐ Telecoms
- ☐ Pest Control
- ☐ Fire Service
- ☐ Fresh Water





## Individual Bars & Tips

### 10mm Threaded Tip - 005T10

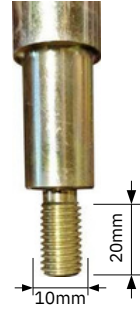
Designed for use on access covers commonly found indoors that have threaded keyholes.

Dimensions (L x D): 160 x 20mm  
 Head Size: M10 x 20mm  
 Weight: 0.3kg  
 Material: Hardened Steel

Light Duty ☺

Used with:

- Drainage
- Gas
- Electricity
- Telecoms
- Pest Control
- Fire Service
- Fresh Water



### 12mm Threaded Tip - 004T12

Designed for use on access covers commonly found indoors that have threaded keyholes.

Dimensions (L x D): 160 x 20mm  
 Head Size: M12 x 20mm  
 Weight: 0.3kg  
 Material: Hardened Steel

Light Duty ☺

Used with:

- Drainage
- Gas
- Electricity
- Telecoms
- Pest Control
- Fire Service
- Fresh Water



### 12mm Hacken Tip - 028HA12

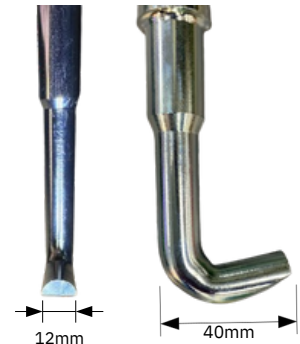
The 12mm Hacken Tip has been designed for use on German covers. Useful in place of a hooked tip.

Dimensions (L x D): 190 x 20mm  
 Head Size: 20mm (L) x 12mm (D) 'J' Shape  
 Weight: 0.3kg  
 Material: Hardened Steel

Medium Duty ☺

Used with:

- Drainage
- Gas
- Electricity
- Telecoms
- Pest Control
- Fire Service
- Fresh Water





## Individual Bars & Tips

### 16mm Hacken Tip - 027HA16

The 16mm Hacken Tip has been designed for use on German covers. Useful in place of a hooked tip.

Dimensions (L x D): 210 x 20mm  
 Head Size: 60mm (L) x 16mm (D) 'J' Shape  
 Weight: 0.3kg  
 Material: Hardened Steel

Heavy Duty ☑

Used with:

- ☑ Drainage
- ☐ Gas
- ☐ Electricity
- ☑ Telecoms
- ☐ Pest Control
- ☐ Fire Service
- ☐ Fresh Water



### 20mm Oval Tip - 009O20

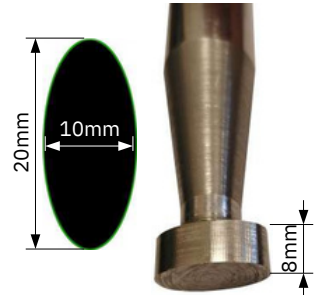
The 20mm Oval tip, originally designed for use with telecom access covers, will fit access covers with a 20mm x 10mm oval shaped keyhole.

Dimensions (L x D): 160 x 20mm  
 Head Size: 20mm (L) x 10mm (D) Oval Shape  
 Weight: 0.3kg  
 Material: Hardened Steel

Light Duty ☑

Used with:

- ☐ Drainage
- ☐ Gas
- ☑ Electricity
- ☑ Telecoms
- ☐ Pest Control
- ☐ Fire Service
- ☐ Fresh Water



### 31mm Oval Tip - 008O30

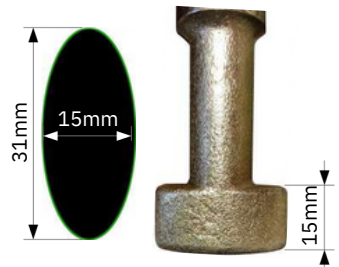
The 31mm Oval tip, originally designed for use in Australia, will fit manhole or access covers with a 31mm x 15mm oval shaped keyhole.

Dimensions (L x D): 160 x 31mm  
 Head Size: 31mm (L) x 15mm (D) Oval Shape  
 Weight: 0.3kg  
 Material: Hardened Steel

Heavy Duty ☑

Used with:

- ☑ Drainage
- ☐ Gas
- ☐ Electricity
- ☐ Telecoms
- ☐ Pest Control
- ☐ Fire Service
- ☐ Fresh Water





## Individual Bars & Tips

### UK Telecoms Tip - 024TL40

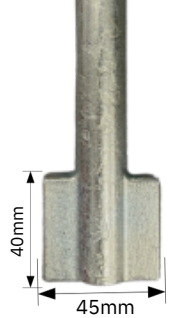
Specifically designed for use with access covers encountered in the telecommunications sector. This tip is equivalent to the Yellow BT Joint Box Key No. 5

Dimensions (L x D): 160 x 20mm  
 Head Size: 45mm (H) x 20mm (D) x 40mm (W)  
 Weight: 0.3kg  
 Material: Hardened Steel

Heavy Duty ☺

Used with:

- Drainage
- Gas
- Electricity
- Telecoms
- Pest Control
- Fire Service
- Fresh Water



### Fire Hydrant Valve Key - 011HYD

Stop tap valve key, designed specifically for use with the CoverUp Key's slide hammer action to prevent the key becoming stuck on valves.

Dimensions (L x D): 200 x 50mm  
 Head Size: 50mm (H) x 50 (D) x 80mm (W)  
 Internal size: 50x50mm reducing to 20x20mm  
 Weight: 0.8kg  
 Material: Cast Stainless Steel

Medium Duty ☺

Used with:

- Drainage
- Gas
- Electricity
- Telecoms
- Pest Control
- Fire Service
- Fresh Water

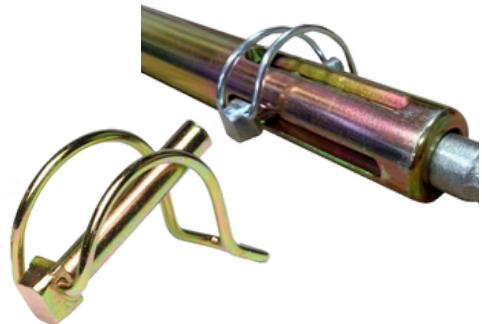


## Accessories

### Retaining Pin - 015CLP

Sprung pin used in The CoverUp Key bar to retain the tips within the tool.

Each full CoverUp Key kit includes 2 x Retaining pins.





## Accessories

### CoverUp Key Accessory Case - 020CUK

Zipped carry case with sleeve for CoverUp Key Bar including internal zipped pocket for tips and retaining clips.

Included with each full CoverUp Key kit.



## The X500

### The Listening Stick for the 21st Century

#### The Old The New



The X500 takes the principles of cotton reel leak detection methods and updates them with upgraded materials and digital technology.

Amplifying the sound up to 500 times, detection is further aided by over the ear headphones (included) and includes a rechargeable battery.



#### X500 – Electronic Leak Detection

Weight	0.7kg
Grip	Blue Acetal
Rod	1m Stainless Steel
Battery	Rechargeable Li-Ion ~6hrs operation



**NEW**

## The height-adjustable Lifter

Upgrade your methods to the very best working practices by using height-adjustable lifting keys **in combination** with the CoverUp Key.

When combined, they are the **ultimate toolkit** for dealing with manhole and inspection covers.

The height-adjustable Lifter uses the same interchangeable tips as the CoverUp Key.

**Height Adjustable:** to maximise ergonomic, natural posture while lifting.

**Interchangeable Tips:** Lift all types of cover with just one key!



Maintain naturally upright posture



**Change the tips - not the key -  
with tools that will lift for a lifetime**

YOUR LOCAL COVERUP KEY SUPPLIER IS...

FIND OUT AT:

[WWW.COVERUPKEY.COM](http://WWW.COVERUPKEY.COM)

Or Call:

+44 1443 704706



info@coverupkey.com | [www.coverupkey.com](http://www.coverupkey.com)  
Patent: EP3400337 | Trademark: UK00003994451