

# COMPLETED PIPELINES



ft pipeline systems

[www.ftpipelinesystems.co.uk](http://www.ftpipelinesystems.co.uk)

# FT Completed Pipelines



ft pipeline systems

## SNOWSWICK – BLUNSDEN - 2019

Instalcom for Thames Water

- **900mm water pipe**
- **Ejoint**
- **Endoprene coating**
- **Eurokote 468 lining**
- **K-60 Canusa HSS**



[www.ftpipelinesystems.co.uk](http://www.ftpipelinesystems.co.uk)

# FT Completed Pipelines



ft pipeline systems

## PURTON RESERVOIR - 2019

Murphy for Bristol Water

- **900mm water pipe**
- **Ejoint**
- **Bare external**
- **Eurokote 468 lining**
- **K-60 Canusa HSS and WrapidBond**



[www.ftpipelinesystems.co.uk](http://www.ftpipelinesystems.co.uk)

# FT Completed Pipelines

## COPTHALL CUTTING – HS2 - 2019

Barhale for Affinity Water

- **800mm water pipe**
- **Ejoint**
- **Eurokote 468 coating**
- **Eurokote 468 lining**
- **K-60 Canusa HSS**



# FT Completed Pipelines



ft pipeline systems

## KIRKLAND BRIDGE - 2018

ABV for Scottish water

- **1400mm waste water pipe**
- **Victaulic couplings**
- **Versathane PU coating**
- **Versathane PU lining**



# FT Completed Pipelines



ft pipeline systems

## DENWALK BRIDGE - 2018

ABV for Scottish water

- **1400mm waste water pipe**
- **Victaulic couplings**
- **Versathane PU coating**
- **Versathane PU lining**



# FT Completed Pipelines

## EAST RENFREWSHIRE RESILIENCE – HIGHLEES 2017

CWA for Scottish Water 2017

- **23km 900mm pipe**
- **Ejoint**
- **3LPE coated**
- **Eurokote 468 lining**
- **Bespoke fittings**
- **K-60 Canusa HSS and WrapidBond/Coat**



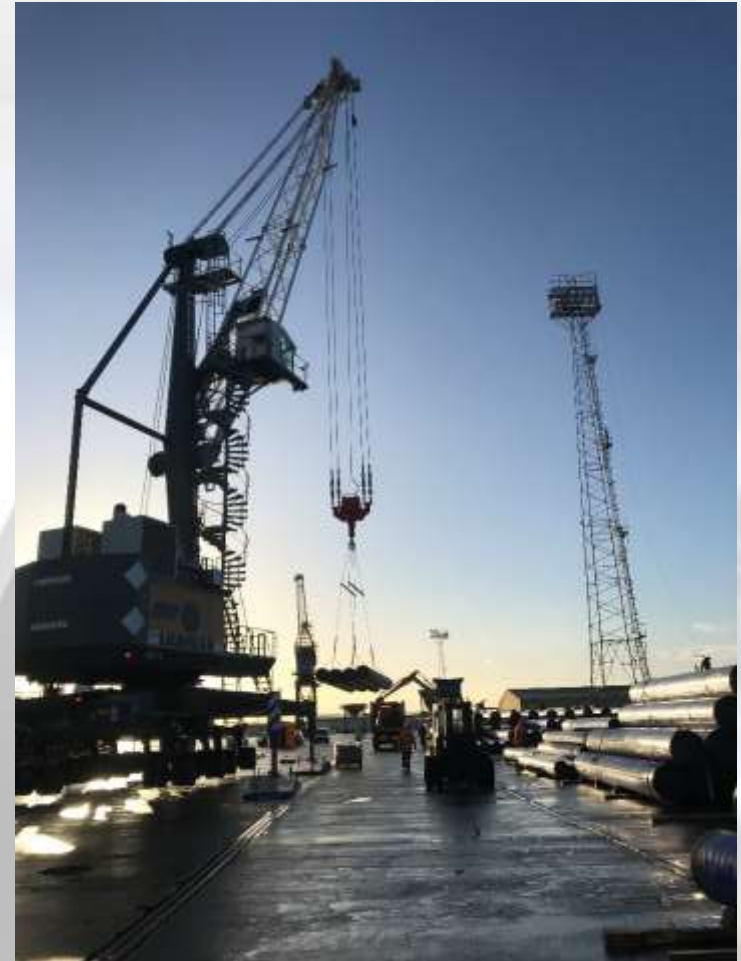
# FT Completed Pipelines



ft pipeline systems

## WELSH WATER – HEREFORD - 2017

- **450mm, 600mm and 700mm water pipes**
- **Ejoint**
- **3LPE coated**
- **Eurokote 468 lining**



[www.ftpipelinesystems.co.uk](http://www.ftpipelinesystems.co.uk)



# FT Completed Pipelines

## EAST RENFREWSHIRE RESILIENCE – AMLAIRD 2016

CWA for Scottish Water 2016

- **23km 900 & 1000mm water pipe**
- **Ejoint**
- **3LPE coated**
- **Eurokote 468 lining**
- **Bespoke fittings**
- **K-60 Canusa HSS and WrapidBond/Coat**



# FT Completed Pipelines



ft pipeline systems

## AXFORD TO OGBOURNE HONDA RAIL CROSSING 2016

SMB JV for Thames Water

- **600mm water pipe**
- **Ejoint**
- **Eurokote 468 lining**
- **3LPE coated**
- **Bespoke spacers**
- **K-60 Canusa HSS**



[www.ftpipelinesystems.co.uk](http://www.ftpipelinesystems.co.uk)

# FT Completed Pipelines

## TALA EAST & WEST TIE IN & MEGGET –2016

Farrans for Scottish Water

- **900mm water pipe**
- **Ejoint**
- **Eurokote 468 Thixo lining**
- **3LPE coated**
- **Bespoke fittings**
- **K-60 Canusa HSS**



## TRANSPORT FOR LONDON UTILITY BRIDGES 2015-16

Upper Holloway, Ardeligh Green, Power Road Bridge - Skanska

- **various diameter water pipes**
- **Ejoint & socket weld**
- **Eurokote 468 & cement mortar linings**
- **3LPE and Versathane coated**
- **Bespoke fittings**
- **K-60 Canusa HSS**



# FT Completed Pipelines



ft pipeline systems

## M1 J11a - 2014

Amey for Affinity Water

- **700mm**
- **Socket weld**
- **Cement mortar linings**
- **3LPE coated**
- **Bespoke fittings**
- **WLO Canusa HSS**



# FT Completed Pipelines



ft pipeline systems

## Prestwich Pumping Main - 2014

United Utilities

- **250mm and 800mm**
- **Ejoint**
- **Epoxy linings**
- **Versathane coated**
- **Bespoke fittings**
- **WLO Canusa HSS**



# FT Completed Pipelines



ft pipeline systems

## MINSTER large diameter tanks - 2014

South East Water

- **2000mm**
- **Butt weld**
- **Epoxy lined and coated**
- **Bespoke manufacture**
- **WLO Canusa HSS**



[www.ftpipelinesystems.co.uk](http://www.ftpipelinesystems.co.uk)

# FT Completed Pipelines



ft pipeline systems

## WHITENDALE - 2014

O'Connor for United Utilities

- **800mm**
- **Ejoint**
- **Epoxy lined**
- **3LPE coated**
- **Bespoke manufacture**
- **WLO Canusa HSS**





# FT Completed Pipelines



ft pipeline systems

## PURTON WTW – 2012

Bristol Water

- **420m of 1400mm Water pipes**
- **Ejoint**
- **3M Epoxy lining**
- **3LPE coated**
- **20 bespoke connection pieces & fittings**
- **WLO Canusa HSS**



[www.ftpipelinesystems.co.uk](http://www.ftpipelinesystems.co.uk)

# FT Completed Pipelines



ft pipeline systems

## ABBERTON ENHANCEMENT – 2012

Carillon for Essex and Suffolk Water

- **2.5km 1200mm, 1000mm, 900mm and 600mm water pipes**
- **Ejoint**
- **3M Epoxy lining**
- **3LPE coated**
- **100+ bespoke connection pieces & fittings**
- **WLO Canusa HSS**



# FT Completed Pipelines



ft pipeline systems

## BELLINGTON AUGER CROSSINGS – 2012

Morgan Sindall for Severn Trent Water

- **500mm water pipes**
- **Socket weld**
- **Cement lining**
- **3LPE coated**
- **WLO Canusa HSS**



[www.ftpipelinesystems.co.uk](http://www.ftpipelinesystems.co.uk)

# FT Completed Pipelines

## GLOUCESTER SECURITY OF SUPPLY and MITCHELDEAN – SEVERN TRENT 2009 & 2012

Morgan Sindall for Severn Trent Water

- **26kms of 600mm water pipes**
- **Socket weld**
- **Seal coated cement lining**
- **3LPE coated**
- **Bends, tees and other fittings**
- **WLO Canusa HSS**



# FT Completed Pipelines

## FINSBURY PARK REPLACEMENT MAINS – 2011

Thames Water

- **1200mm water pipes**
- **Ejoint**
- **3M epoxy lining**
- **3LPE coated**
- **WLO Canusa HSS**



# FT Completed Pipelines

## TAUNTON WTW –2011

Trant Engineering for Wessex Water

- **100mm & 600mm water pipes**
- **Socket weld and butt weld**
- **Seal coated cement lining**
- **3LPE coated**
- **Bespoke bends**
- **PLA and WLO Canusa HSS**



# FT Completed Pipelines

## DUTCH INTERCONNECTOR GAS MAIN – 2011

Nacap

- **Canusa GTS 65**
- **3 layer sleeves**



# FT Completed Pipelines



ft pipeline systems

## CARSTAIRS PIPEBRIDGE – 2011

Farrans for Scottish Water

- **300mm pipes**
- **Pipebridge carrying sewage sludge**
- **Epoxy internal lining** (capable of dealing with aggressive nature of sludge)
- **Epoxy coating**
- **Dark green exterior** (in keeping with the environment)





# FT Completed Pipelines



ft pipeline systems

## WING PIPELINE – 2010

J N Bentley for Anglian Water

- **1000mm water pipe**
- **Ejoint**
- **3M Epoxy lined**
- **3LPE coated**
- **Bespoke fittings**
- **WLO Canusa HSS**



[www.ftpipelinesystems.co.uk](http://www.ftpipelinesystems.co.uk)

# FT Completed Pipelines



ft pipeline systems

## STRATFORD PARK, LONDON 2010

Olympic Delivery Authority

- **Multiple km 80mm to 1200mm water pipe**
- **Spigot and Socket, Ejoint and socket weld**
- **Cement lined and epoxy lined**
- **3LPE coated**
- **100+ fittings for welded systems and 100s for spigot & socket, including valves, couplings, bolt sets**
- **100s of Canusa sleeves**



[www.ftpipelinesystems.co.uk](http://www.ftpipelinesystems.co.uk)

# FT Completed Pipelines



ft pipeline systems

## CANOE PARK – 2009

Olympic Delivery Authority

- **600mm water pipe**
- **Ejoint**
- **3M Epoxy**
- **3LPE coated**
- **Bespoke fittings**
- **WLO Canusa HSS**



[www.ftpipelinesystems.co.uk](http://www.ftpipelinesystems.co.uk)

# FT Completed Pipelines



ft pipeline systems

## WELM PHASE 1 – 2009

Murphy for United Utilities

- **18km 1200mm water pipe**
- **Ejoint**
- **3M Epoxy**
- **3LPE coated**
- **Bespoke fittings**
- **WLO Canusa HSS**



# FT Completed Pipelines



ft pipeline systems

## OLDHAM WTW – 2009

United Utilities

- **1200mm water pipe**
- **Flanged and tie bars**
- **3M Epoxy**
- **3M Skotchkote coating**
- **Bespoke fittings**



[www.ftpipelinesystems.co.uk](http://www.ftpipelinesystems.co.uk)

# FT Completed Pipelines



ft pipeline systems

## **BRAY MAIN – 2008**

Holleran for South East Water

- **17km 1200mm water pipe**
- **Socket weld**
- **Cement lined**
- **3LPE coated**
- **150+ fittings**
- **1500 Canusa sleeves**



[www.ftpipelinesystems.co.uk](http://www.ftpipelinesystems.co.uk)

# FT Completed Pipelines



ft pipeline systems

## BLYTH MAIN – 2008

Northumbrian Water

- **3.2km 400mm water pipe**
- **Socket weld**
- **Seal coated cement**
- **3LPE coated**
- **Bespoke fittings**
- **WLO Canusa HSS**



# FT Completed Pipelines



ft pipeline systems

## BUDDS FARM – 2007

4D for Southern Water

- **1400mm water pipe**
- **Square ends**
- **3M Epoxy lined**
- **Sinta PE coated**
- **Bespoke fittings**
- **WLO Canusa HSS**





# FT Completed Pipelines



ft pipeline systems

## BRINE MAIN – E-ON POWER 2007

- **500mm brine main**
- **Ejoint**
- **3M Epoxy lined**
- **3LPE coated**
- **Bespoke fittings**
- **WLO Canusa HSS**



# FT Completed Pipelines



ft pipeline systems

## TRIMPLEY – 2007

McAlpine for Severn Trent Water

- **500mm water pipe**
- **Ejoint**
- **3M Epoxy**
- **3LPE coated**
- **Bespoke fittings**
- **WLO Canusa HSS**



[www.ftpipelinesystems.co.uk](http://www.ftpipelinesystems.co.uk)

# FT Completed Pipelines



ft pipeline systems

## RIVER MAIN – E-ON POWER 2007

- **Multiple km 500mm raw water pipe**
- **Ejoint**
- **3M Epoxy**
- **3LPE coated**
- **Bespoke fittings**
- **WLO Canusa HSS**



[www.ftpipelinesystems.co.uk](http://www.ftpipelinesystems.co.uk)

# FT Completed Pipelines



ft pipeline systems

## GASPORT – ACCELERATE ENERGY 2006

- **3km 200mm seamless gas pipes**
- **Butt weld**
- **3LPE coating**
- **GTS-65 Canusa HSS**



# FT Completed Pipelines



ft pipeline systems

## BARCOMBE PIPELINE – 2006

South East Water

- **800mm water pipe**
- **Socket weld**
- **Cement lined**
- **3LPE coated**
- **Bespoke fittings**
- **WLO Canusa HSS**



# FT Completed Pipelines



ft pipeline systems

## DUNORE TO HYDEPARK – 2006

Murphy for DOE

- **1200mm water pipe**
- **Ejoint**
- **3M Epoxy**
- **3LPE coated**
- **Bespoke fittings**
- **WLO Canusa HSS**



[www.ftpipelinesystems.co.uk](http://www.ftpipelinesystems.co.uk)

# FT Completed Pipelines

## SWAYTHLING – 2006

4D for Southern Water

- **1.4km 450mm water pipe**
- **Socket weld**
- **Seal coated cement**
- **3LPE coating**
- **Bespoke fittings**
- **TBK Canusa HSS**



# FT Completed Pipelines



ft pipeline systems

## ST CATHERINE'S – 2006

4D for Southern Water

- **800m 150mm water pipe**
- **Socket weld**
- **Seal coated cement**
- **3LPE coating**
- **Bespoke fittings**
- **WLO Canusa HSS**



[www.ftpipelinesystems.co.uk](http://www.ftpipelinesystems.co.uk)



# FT Completed Pipelines



ft pipeline systems

## WOODFORD – 2005

Murphy for Thames Water

- **13.4km 1200mm water pipe**
- **Ejoint**
- **3M Epoxy**
- **3LPE coated**
- **Bespoke fittings**
- **WLO Canusa HSS**



# FT Completed Pipelines

## BARROW HYDROCARBON PIPELINE 2005

- **700mm & 150mm hydrocarbon pipes**
- **WLO Canusa HSS**

## INTERCONNECTOR – N GRID 2005

- **1200mm gas pipeline**
- **WLO Canusa HSS**



# FT Completed Pipelines



ft pipeline systems

## DARTFORD PARK – 2005

McAlpine for Thames Water

- **600mm, 350mm & 300mm water pipe**
- **Ejoint and spigot & socket**
- **3M Epoxy & Cement lined**
- **3LPE coated**
- **Bespoke fittings**
- **WLO and PMA Canusa HSS**



[www.ftpipelinesystems.co.uk](http://www.ftpipelinesystems.co.uk)

# FT Completed Pipelines



ft pipeline systems

## BISHOPSTON – 2005

Severn Trent Water

- **500mm water pipe**
- **Socket weld and Spigot & socket**
- **Seal coated cement**
- **3LPE coating**
- **Bespoke and DI fittings**
- **WLO & PMA Canusa HSS**



[www.ftpipelinesystems.co.uk](http://www.ftpipelinesystems.co.uk)

# FT Completed Pipelines



ft pipeline systems

## SNIPERLEY GRANGE – 2005

Northumbrian Water

- **800mm water pipe**
- **Square ends**
- **3M Epoxy**
- **3M Skotchkote coating**
- **Bespoke fittings**
- **Cold tapes**



[www.ftpipelinesystems.co.uk](http://www.ftpipelinesystems.co.uk)

# FT Completed Pipelines



ft pipeline systems

## HOLYWELL DENE – 2005

Northumbrian Water

- **700mm water pipe**
- **Ejoint**
- **3M Epoxy**
- **3LPE coated**
- **Bespoke fittings**
- **WLO Canusa HSS**



[www.ftpipelinesystems.co.uk](http://www.ftpipelinesystems.co.uk)

# FT Completed Pipelines



ft pipeline systems

## ELRED – 2004

Thames Water

- **400mm & 600mm water pipe**
- **Flanged**
- **Cement lined**
- **3LPE coated**
- **WLO Canusa HSS**



[www.ftpipelinesystems.co.uk](http://www.ftpipelinesystems.co.uk)

# FT Completed Pipelines



ft pipeline systems

## GREAT BARFORD – 2004

Laing for Anglian Water

- **500mm & 700mm water pipe**
- **Ejoint**
- **3M Epoxy**
- **3LPE coated**
- **Bespoke fittings**
- **WLO Canusa HSS**



[www.ftpipelinesystems.co.uk](http://www.ftpipelinesystems.co.uk)



# FT Completed Pipelines



ft pipeline systems

## BARROW – 2004

Laing for Anglian Water

- **900mm & 1200mm water pipe**
- **Ejoint**
- **3M Epoxy**
- **3LPE coated**
- **Bespoke fittings**
- **WLO Canusa HSS**



[www.ftpipelinesystems.co.uk](http://www.ftpipelinesystems.co.uk)

# FT Completed Pipelines



ft pipeline systems

## STOURPORT – 2004

Walter Lawrence for South Staffordshire Water

- **400mm & 600mm water pipe**
- **Socket weld**
- **Cement mortar**
- **3LPE coating**
- **TBK Canusa HSS**



# FT Completed Pipelines



ft pipeline systems

## BIRMINGHAM HOSPITAL – 2004

Morgan Est for Severn Trent Water

- **1.6km 1100mm water pipe**
- **Socket weld**
- **3M Epoxy**
- **3M Skotchkote coating**
- **Bespoke fittings**
- **WLO Canusa HSS**



[www.ftpipelinesystems.co.uk](http://www.ftpipelinesystems.co.uk)

# FT Completed Pipelines



ft pipeline systems

## PERRY OAKS – 2003

Subterra for Thames Water

- **11km 300mm water pipe**
- **DKM**
- **Cement lined**
- **3LPE coated**
- **Bespoke fittings**
- **PMA Canusa HSS**



[www.ftpipelinesystems.co.uk](http://www.ftpipelinesystems.co.uk)

# FT Completed Pipelines



ft pipeline systems

## SEAL SANDS – BOC 2003

- **200mm water pipe**
- **Socket weld**
- **Cement lined**
- **3LPE coated**
- **Bespoke fittings**
- **WLO Canusa HSS**



[www.ftpipelinesystems.co.uk](http://www.ftpipelinesystems.co.uk)

# FT Completed Pipelines



ft pipeline systems

## HAMS HALL – 2002

McAlpine for Severn Trent Water

- **250mm water pipe**
- **butt weld**
- **Seal coated cement**
- **3LPE**
- **Bespoke fittings**
- **TBK Canusa HSS**



[www.ftpipelinesystems.co.uk](http://www.ftpipelinesystems.co.uk)

# FT Completed Pipelines



ft pipeline systems

## ALBERT DOCKS – 2002

Thames Water

- **450mm DI pipe**
- **Spigot and socket**
- **WLOX Canusa HSS**



[www.ftpipelinesystems.co.uk](http://www.ftpipelinesystems.co.uk)

# FT Completed Pipelines



ft pipeline systems

## DUNDEE WATER SUPPLY – 2002

Farrans Construction for Scottish Water

- **20km 1000mm steel**
- **Spigot weld**
- **WLO Canusa HSS**



[www.ftpipelinesystems.co.uk](http://www.ftpipelinesystems.co.uk)



# FT Completed Pipelines



ft pipeline systems

## VARIOUS SCHEMES – 2000-2009

Thames Water

- **Multiple km 100mm to 300mm water pipe**
- **Spigot & socket**
- **Cement lined**
- **3LPE coated**
- **WLO Canusa HSS**



# Project Management



ft pipeline systems

The FT Group has many years experience in project management. This starts with the marketing and promotion of the materials available through to presentations and complex negotiations on requirements and price.

Once an order has been secured the FT Project Team work with the supply chain to facilitate the supply to the client. This includes provision of relevant documentation and manufacturing schedules.

The FT Project Team then arranges the logistics, collaborating with the client and the site in order to deliver the required materials in the time frame required.

Finally, by attending site, the FT Project Team are on hand to provide training and to advise where and if required. This includes for QA checks on materials arriving on site.

[www.ftpipelinesystems.co.uk](http://www.ftpipelinesystems.co.uk)

# Contacts



ft pipeline systems

Ian Harding – Managing Director  
Duncan Frazer – Head of Business

07974 217905  
07768 132900

Tel: 01543 416024

Fax: 01543 416261

Email: enquiries @ftpipelinesystems.co.uk

[www.ftpipelinesystems.co.uk](http://www.ftpipelinesystems.co.uk)

Certified for :  
ISO 9001  
ISO 14001  
OHSAS 18001



[www.ftpipelinesystems.co.uk](http://www.ftpipelinesystems.co.uk)